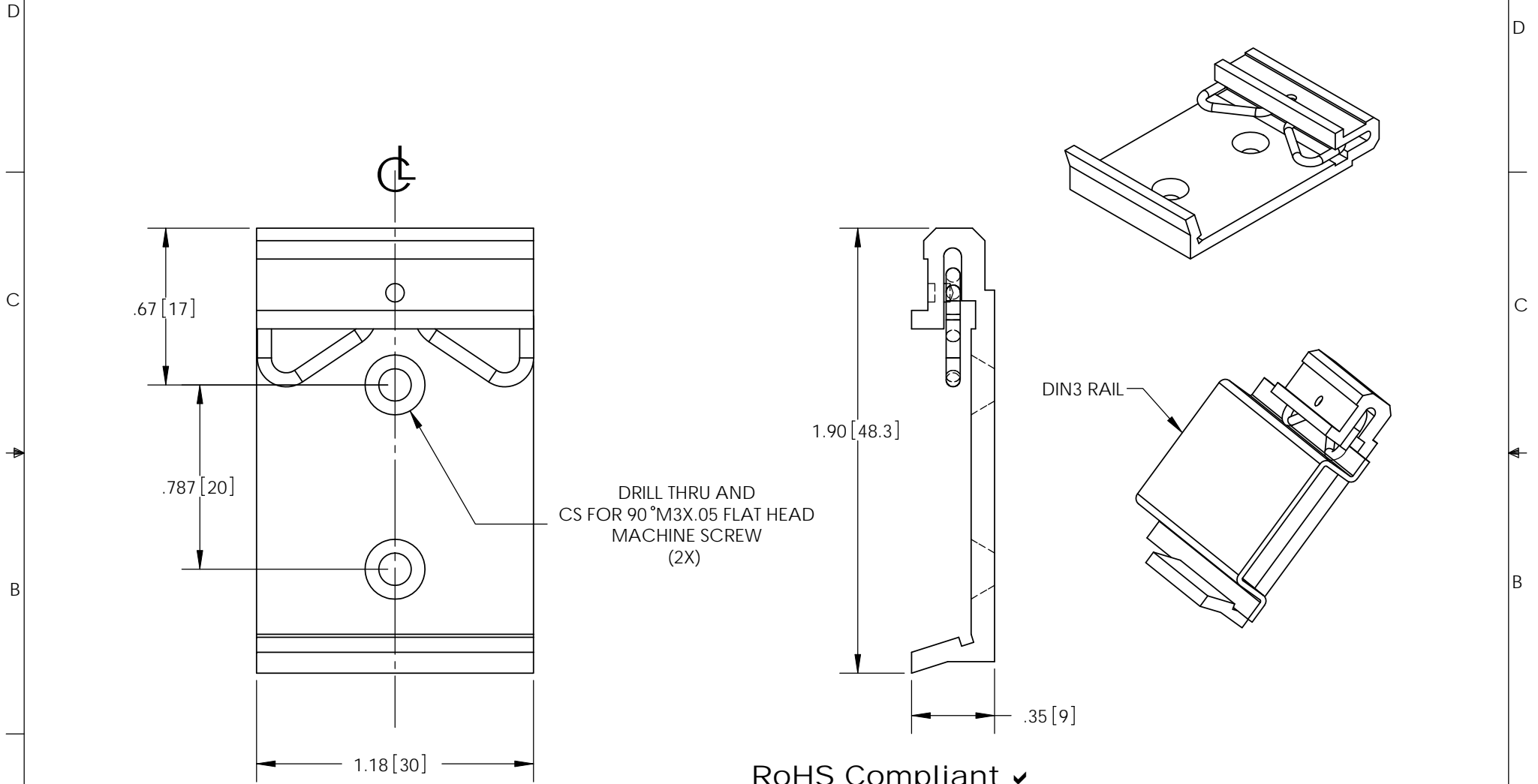


THE INFORMATION CONTAINED IN THIS DRAWING IS THE SOLE PROPERTY OF L-COM, INC. ANY REPRODUCTION IN PART OR WHOLE WITHOUT THE WRITTEN PERMISSION OF L-COM, INC. IS PROHIBITED.

| REVISIONS | | | |
|-----------|---|----------|------------|
| REV | DESCRIPTION | DATE | APPROVED |
| A | INITIAL RELEASE | 08/11/11 | B.PUCHASKI |
| B | CHANGED FINISH BLACK PWDCOAT TO SILVER SB OX (ECN#5662) | | |
| | | | |



NOTES:
 MATERIAL: ALUMINUM EXTRUSION
 FINISH: SILVER SAND BLASTING OXIDATION
 PACKAGING:
 COMPONENT SHALL BE PACKAGED IN ACCORDANCE WITH L-COM SPEC PKG-00012.

RoHS Compliant ✓

| | | | | | |
|---|--|-------------|----------------------------|--|------|
| UNLESS OTHERWISE SPECIFIED, DIMENSIONS ARE IN INCHES [mm] DIMENSIONAL TOLERANCES: .X = ±.1 .XX = ±.01 .XXX = ±.005 ANGULAR TOLERANCES: ALL = ± 1° PROJECTION | APPROVALS | DATE | | 45 BEECHWOOD DRIVE NORTH ANDOVER, MA 01845 | |
| | DRAWN BY B.PUCHASKI | 05/10/11 | | | |
| | CHECKED BY P.PESA | 05/10/11 | CATEGORY | LP | |
| | APPROVED BY P.PESA | 05/10/11 | PRODUCT DESCRIPTION | DIN3 RAIL MOUNT CLIP 30 | |
| | CONFIGURATION DETAILS OF UNDIMENSIONED FEATURES MAY VARY | SIZE | FSCM NO. | DWG. NO. | REV. |
| | COLOR VARIATIONS MAY OCCUR | A | 43321 | DIN-MNT30 | B |
| | | SCALE: NONE | CAD FILE: DIN-MNT30.SLDDRW | SHEET 1 OF 1 | |